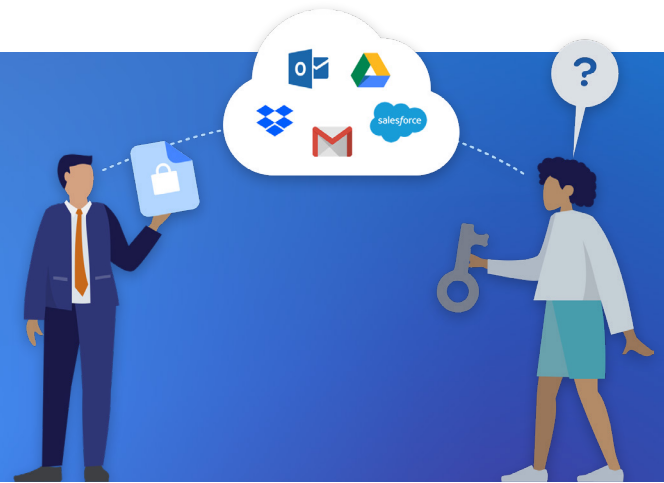


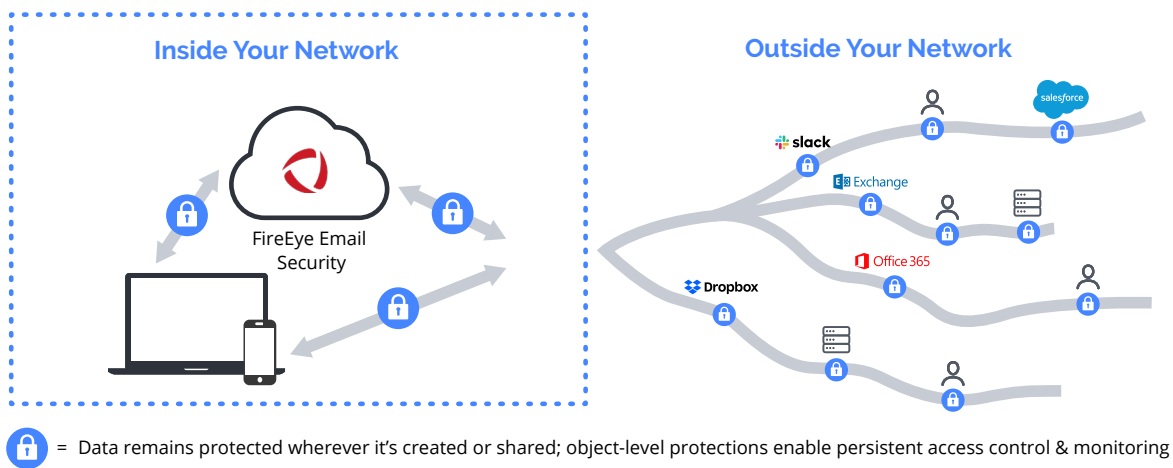
FireEye Email Protection and Monitoring

Powered by Virtru Data Protection



Easily Protect Data, and Maintain Control Wherever It's Shared.

FireEye and Virtru foster secure collaboration by enabling persistent protection, control, and visibility of sensitive email and file attachments as they travel in and out of your environment.



Enforce Policies to Protect and Control Sensitive Data

FireEye Email Security (EX) incorporates Virtru's object-level encryption to enable easy, secure sharing of emails and attachments, proactively scanning content and applying data-centric protection.

Virtru offers advanced rights management options that enforce data access policies. You can detect sensitive content then disable forwarding, set access expiration, and watermark file attachments to prevent data exfiltration activity.

Integrate with Helix Threat Analytics for Granular Visibility and Persistent Control

As content is created and shared in the cloud, security teams maintain granular visibility of who has accessed protected data when, where, and for how long. Virtru event logs integrate with FireEye Helix to allow security teams to automatically remediate threats - for example, by revoking data after seeing it was accessed in a hostile IP range or by a former employee.